

Eagle Water acquisition

by SUEZ Idaho, January 2019



Water rates in the Treasure Valley

SUEZ rates are comparable to other water utilities in the valley and are slightly lower than the City of Eagle's rates. Eagle Water customers would pay the same rates as other SUEZ customers. Existing SUEZ customers' rates will remain the same.

SUEZ	EWC	City of Eagle	City of Meridian	City of Nampa
Residential \$38	Residential \$13	Residential \$48	Residential \$28	Residential \$33
Business \$159	Business \$40	Business \$173	Business \$112	Business \$110

Average rates calculated for a 3/4" meter using 16 ccf (hundred cubic feet) of monthly water usage. Includes all applicable fees and taxes.

Overview

SUEZ filed a joint application with the Idaho Public Utilities Commission (PUC) in November to acquire Eagle Water assets. The PUC's process is thorough, and may take up to 8 months for a decision.



Benefits to Eagle Water Company Customers

If the acquisition is approved, Eagle Water customers will enjoy reliable, safe drinking water, 24-hour monitoring by experienced, licensed professionals, online services, local 24-hour customer service, and the backing of more than 100 employees in Idaho.

Any entity that purchases Eagle Water will need to raise Eagle Water customer rates to address system deficiencies, correct regulatory shortfalls, and absorb the acquisition cost.

SUEZ has water rights and facilities that can be integrated into the Eagle Water system to ensure customers have the fire protection and water supply they need.

The City of Eagle, which has the

highest rates for comparable water usage of surveyed water providers in the Treasure Valley, would need to increase its rates even higher to pay off the proposed revenue bond needed to pay the acquisition and system upgrade costs.

Increased City of Eagle water rates would then be paid by all users of the city municipal water system, not just the acquired Eagle Water customers.

SUEZ also has low income assistance, water conservation, and budget billing programs that help customers on low or fixed incomes manage their water usage and bills.

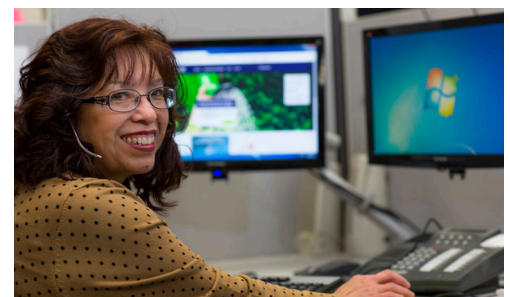
Turn over the page to see how your rates would be affected if the application to acquire Eagle Water is approved as proposed.

Serving Idaho

Our Idaho office is staffed by more than 100 people, all of whom live in the Treasure Valley. Idahoans will read your meters, answer your calls, repair the pipes, and ensure you have safe, dependable drinking water.

Every year in Idaho, SUEZ spends:

- \$1M in Idaho income taxes
- \$2M in Ada County property taxes
- \$14M to Idaho businesses



Contact us

Questions? Call (208) 362-7304.

Visit www.mysuezwater.com/eaglewater for regular updates



Rates according to season and year

If the application to acquire Eagle Water is approved as proposed, Eagle Water customers would see a gradual increase in their water rates over 3 years. The increase would bring customers level with SUEZ rates in the Treasure Valley. Existing SUEZ customers will not see any increased rates due to the acquisition.

The table below outlines what your rates would look like in the summer and winter across the next 3 years.

Example residential bills

Current Eagle Water Residential bill	Year 1 <i>Summer bill</i>	Year 1 <i>Winter bill</i>	Year 2 <i>Summer bill</i>	Year 2 <i>Winter bill</i>	Year 3 <i>Summer bill</i>	Year 3 <i>Winter bill</i>
\$10	\$14	\$13	\$21	\$19	\$28	\$26
\$20	\$35	\$29	\$52	\$44	\$70	\$58
\$30	\$55	\$45	\$82	\$67	\$109	\$89
\$40	\$75	\$61	\$113	\$92	\$150	\$122
\$50	\$97	\$78	\$145	\$117	\$194	\$156

Example commercial bills

Current Eagle Water Commercial bill	Year 1 <i>Summer bill</i>	Year 1 <i>Winter bill</i>	Year 2 <i>Summer bill</i>	Year 2 <i>Winter bill</i>	Year 3 <i>Summer bill</i>	Year 3 <i>Winter bill</i>
\$40	\$82	\$67	\$122	\$101	\$163	\$135
\$60	\$124	\$101	\$186	\$151	\$248	\$201
\$80	\$164	\$133	\$246	\$199	\$328	\$265
\$100	\$206	\$166	\$310	\$249	\$413	\$332
\$120	\$247	\$198	\$370	\$297	\$493	\$396
\$140	\$288	\$231	\$432	\$345	\$576	\$461

Contact the PUC

File a comment with the PUC.

<http://www.puc.idaho.gov/forms/casecomment.aspx>

Read the application, public comments, and additional information submitted to the PUC.

<http://www.puc.idaho.gov/fileroom/cases/summary/EAGW1801.html>

Visit www.mysuezwater.com/eaglewater for regular updates

