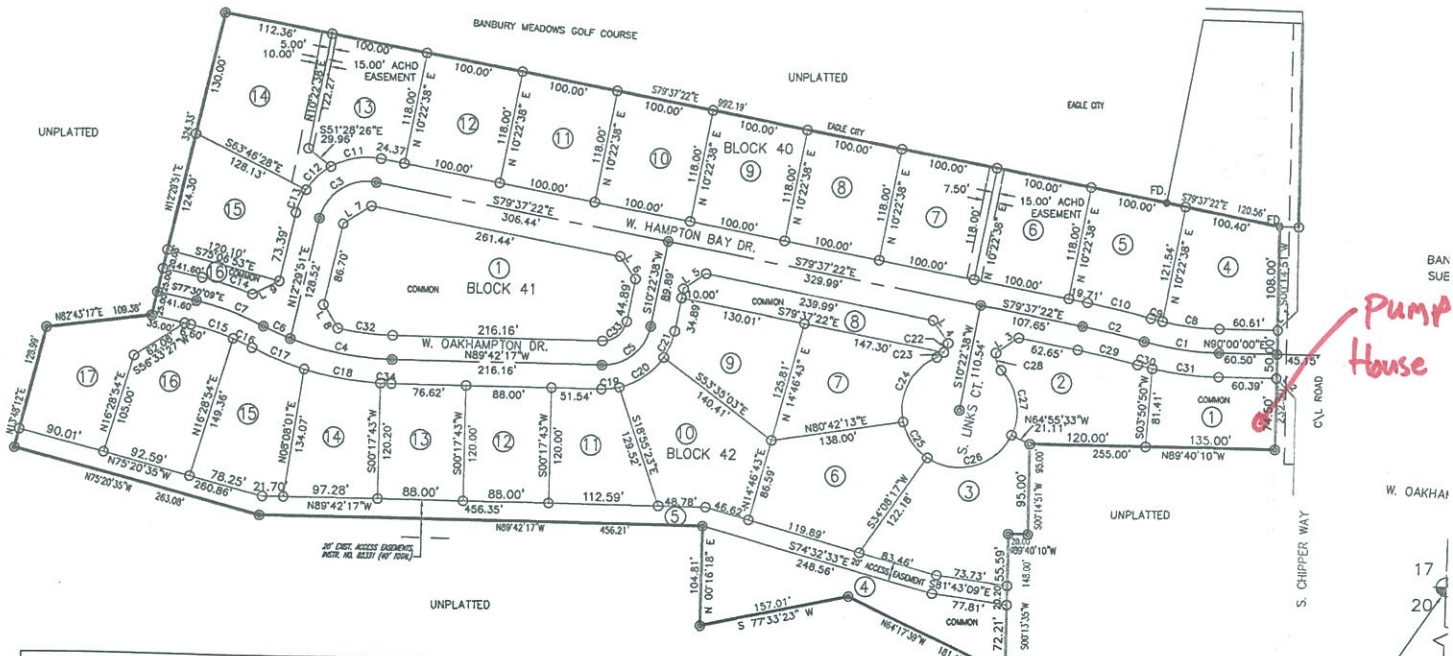


BANBURY MEADOWS SUBDIVISION NO. 8

A HOFF COMPANIES INC. DEVELOPMENT
 PORTIONS OF SECTIONS 19 AND 20, T. 4N., R. 1 E., BOISE MERIDIAN, CITY OF EAGLE, ADA COUNTY, IDAHO
 -JOHNSON ENGINEERING-
 2015



CURVE TABLE						
CURVE	RADIUS	LENGTH	TANGENT	CHORD	BEARING	DELTA
C1	300.00	79.05	39.76	78.82	S82°27'04"E	15°05'53"
C2	800.00	65.91	32.98	65.90	N77°15'45"W	4°43'15"
C3	50.00	76.69	48.18	69.39	S56°26'14"W	87°52'47"
C4	300.00	107.67	54.42	107.09	S79°25'23"E	20°33'48"
C5	50.00	69.74	41.89	64.22	N50°20'10"E	79°55'05"
C6	300.00	30.49	15.26	30.48	S66°13'48"E	5°49'23"
C7	300.00	74.27	37.32	74.08	N70°24'38"W	14°11'03"
C8	275.00	60.05	30.14	59.93	S81°44'40"E	12°10'40"

LINE TABLE		
LINE	LENGTH	BEARING
L 1	28.22	N45°07'21"E
L 2	28.34	S44°52'40"E
L 3	28.28	S55°22'38"W
L 4	28.28	S34°37'22"E

FOUND BRASS CAP
 NE CORNER SECTION 20
 T4N, R1E, BOISE MERIDIAN
 C P&F# 98120707